

# THE FRIENDS OF ALGONQUIN PARK

Newsletter ~ No. 30 ~ 2015

*Enhancing the educational and interpretive programs in Algonquin Park*

The Friends of Algonquin Park is an organization dedicated to the enhancement of human and natural history education in Algonquin Park.

Algonquin Park captures the hearts and minds of those who visit. Whether it is the pristine lakes and wilderness, the backcountry solitude, the world-class museums, or the camaraderie of a developed campground, there is something here to enrich the spirits of all who experience Ontario's oldest provincial park.

For over 30 years, The Friends has continued to accomplish so much because of the commitment of people like you. With the help of our volunteers, members, donors and partners we have been able to continue to foster a great appreciation for Algonquin Park. In its beginning, The Friends developed, published and distributed the official park publications. Then, funds were raised for the construction and implementation of the world class natural and cultural exhibits you see at the Visitor Centre and Logging Museum.

As we enter into the 4th decade our efforts continue to diversify to meet the needs of Park visitors.

Many of our initiatives are ongoing such as the Group Education program and Experience Algonquin educational programs; providing front line interpretive staff for both the Visitor Centre and Logging Museum; hosting Loggers Day, Meet the Researcher Day, and Winter in the Wild Festival – all recurring events that Park visitors appreciate.

Every year we commit to these ongoing projects and to supporting many new projects that enhance Park visitors' understanding and appreciation of this special place. The Friends continued ability to provide meaningful contributions to this magical place is powered by our many supporters, donors, members and volunteers who are passionate about Algonquin Park. Because of the commitment of these passionate people we are able to continue to share with visitors all the virtues that make it so unique – ensuring there are future stewards of this amazing place – **Your Algonquin!**

For information on The Friends of Algonquin Park, join our eNews at [www.algonquinpark.on.ca](http://www.algonquinpark.on.ca) or email [friends@algonquinpark.on.ca](mailto:friends@algonquinpark.on.ca)



## NEW FIRE TOWER TRAIL OPEN AT THE ALGONQUIN PARK VISITOR CENTRE!



With funding from The Friends of Algonquin Park and the guests of Blue Spruce Resort, Ontario Parks has completed a new trail at the Algonquin Park Visitor Centre.

This fully accessible trail is 200 metres (660 feet) round-trip and goes to a viewpoint overlooking the Sunday Creek valley where there is a replica of a cupola (wooden lookout structure) that was at the top of steel fire towers in Algonquin Park. Along the route, discover more about fire and fire towers in Algonquin Park through a series of exhibit panels. The Fire Tower Trail is located at the entrance to the Algonquin Park Visitor Centre (km 43).

Thank you to the Algonquin College Carpenter Apprentice Program and the Fire Rangers of the Ontario Ministry of Natural Resources and Forestry in Pembroke, ON for their efforts in building and assembling the cupola.



## GROUP EDUCATION PROGRAM

Join a Park Naturalist to experience Algonquin's fascinating human and natural history. The Friends of Algonquin Park is pleased to continue to offer school, youth, and adult groups a wide variety of educational programs. Over 70 programs are available in half-day, full-day, evening and overnight formats. Whether for a short stay or a multi-day adventure, a special Algonquin

Park itinerary can be tailored to your group's interests.

For more information: (613) 637-2828 ext. 224 or [education@algonquinpark.on.ca](mailto:education@algonquinpark.on.ca) or download program details from [www.algonquinpark.on.ca](http://www.algonquinpark.on.ca)



## 2014 GERMAN-SPEAKING INTERN

In 2014, for the second consecutive year, The Friends of Algonquin Park was able to add a German-speaking Intern to our team. Annemarie Eckes was a very helpful addition to our staff. Annemarie worked as a Museum Technician providing services to German visitors and also assisted with the delivery of Group Education Programs to German groups. Our sincere thanks to a very generous donor for making this possible.



## 25th ANNUAL RAFFLE

2015 Special Events

The Friends of Algonquin Park's 2014 Fundraising Raffle was another great success raising over **\$21,000!** This raffle has been an annual event since 1990 and has now raised over **\$283,800**

**Congratulations to our 2014 prize winners:**

- 1st – B. Snyder, Kingsville, ON
- 2nd – L. & B. Burford, Stratford, ON
- 3rd – T. Ziltener, Mitchell, ON
- 4th – E. Binnie, Greely, ON
- 5th – B. Jones, Uxbridge, ON
- 6th – T. O'Neill, Wasaga Beach, ON
- 7th – M. Alderson, Brantford, ON
- 8th – W. Wong, Richmond Hill, ON
- 9th – H. Kranenburg, Trenton, ON
- 10th – S. Pomper, Toronto, ON
- 11th – M. & D. Schmidt, Caledonia, ON
- 12th – J. Butler, Mississauga, ON



Ron Tozer, FOAP Board Member and Trina Chatelain, FOAP Staff Member drawing the winning raffle tickets.

## 2015 Raffle!

If you would like to be the winner of a great Algonquin prize be sure to pick up your tickets while in the park. The 2015 Raffle promises to once again include many amazing prizes such as beautiful canoes, accommodation packages at Algonquin area resorts and lodges, a complete canoeing outfitting package, a guided Fishing Trip, Summer and Winter Adventure Packages, beautiful Algonquin artwork and more. Please show your passion for Algonquin by purchasing raffle tickets!



Welcome • Willkommen • 歓迎

**de** Join a bilingual **German-English** speaking Naturalist who can help you get the most out of your Algonquin Park visit. This service is available from May through August. Please inquire for complete details.

**ja** Japanese language programming is available during September and October in Algonquin Park. Please inquire for availability and program options.

**en** English language programming is available throughout the year.

*Please show your passion for Algonquin by purchasing raffle tickets!*

The Directors Award was established in 1985 by The Friends of Algonquin Park to honour those who have made significant contributions toward the appreciation of Algonquin Park.

On Saturday, June 14th, 2014 The Friends of Algonquin Park presented Don Beauprie with the 2014 Directors Award in recognition of his many outstanding contributions to Algonquin Park and in recognition of his best-selling book, *Destination Algonquin Park: Tracks to Cache Lake and the Highland Inn*. The Friends hosted a celebration beginning with a presentation followed by a light lunch. Current and honorary Directors, past Directors, Award recipients and invited guests were in attendance.

Don Beauprie's parents took out a cottage lease on Cache Lake in 1927,

## DON BEAUPRIE RECEIVES THE FRIENDS OF ALGONQUIN PARK DIRECTORS AWARD



and Don has been part of the vibrant leaseholder community on the lake since his birth in 1930. His passion for researching and documenting the history of Cache Lake and Algonquin Park culminated in the publication of his book in 2011 (available at: [www.algonquinpark.on.ca](http://www.algonquinpark.on.ca)). The book was short-listed for the Ontario Speaker's Book Award in 2012. That award is presented by the Speaker of the Ontario Legislature and recognizes works by Ontario authors reflecting the diverse culture and rich history of the province and of its residents.

Dr. Beauprie undertook more than 20 years of research in the preparation of his book, including extensive research at numerous archives, reviewing early newspaper accounts, and interviewing old-timers and their relatives. His notes and other materials collected during this research have been generously donated to the Algonquin Park Archives, as have many artifacts, historical photographs and memorabilia obtained by Don over the years.



Algonquin Park Webcam



Watch Algonquin Park during any season. Choose from either live streaming video or panorama images of the view from the Algonquin Park Visitor Centre courtesy of The Friends of Algonquin Park in partnership with EarthCam and sponsored by The Couples Resort. See it at [www.algonquinpark.on.ca](http://www.algonquinpark.on.ca)



[WWW.ALGONQUINPARK.ON.CA](http://WWW.ALGONQUINPARK.ON.CA)



FOAPAlgonquinPark



TheFriendsofAlgonquinPark



@AlgonquinPark



## WINTER IN THE WILD

The 4th Annual Winter in the Wild Festival was held on Saturday, February 14, 2015 (Family Day Weekend).

Many people participated in this family event to celebrate winter in Algonquin Park.

There were a wide variety of activities held at various locations throughout the Highway 60 Corridor of Algonquin Park, such as snowshoeing, tracking, winter bird walks, tours of the collections room, ice

skating, cross-country skiing, winter camping demos, camp fires, marshmallow-roasting and more...

We sincerely thank our generous Sponsors:



and, our enthusiastic Volunteers: Marc & Lynda Maheu, Jolene Haines, Mariska Engels, Lev Frid, Sonje Bols, Cortney Lee-Comeau, Bev & Ken Richardson.

## ACHRAY HISTORIC SITE EXHIBIT

The commemoration of the 100th anniversary of the addition of the "East Side" area to the Park, which almost doubled the size of Algonquin Park was celebrated on Saturday, July 12, 2014 by the installation of new interpretive panels known as the Achray Historic Site Exhibit. The exhibit describes some of the area's rich history through six interpretive panels. Be sure to visit the Achray Campground to enjoy this new exhibit.



## Loggers Day

On Saturday, July 26th, 2014 we hosted our 19th Annual Loggers Day in cooperation with the Algonquin Forestry Authority and Ontario Parks, attracting over 890 park visitors for an interesting day of live historical interpretation and entertainment.

The Algonquin Logging Museum came to life with demonstrations, exhibitors and activities that allowed visitors of all ages a glimpse into historical and modern practices of logging in Algonquin Provincial Park. The interpretive trail at the Logging Museum hosted authentic food, entertaining music, many genuine logging characters, a model alligator and even a few hands-on activities for the "kids" in all of us.

A special thanks to our partners, exhibitors and volunteers who made this day possible: Algonquin Forestry Authority, Algonquin Ice Company, Algonquin Park Services, Lori Beecroft, John Brook, Andrea Coulter, Kim Coulter, Harv Cowan, Robert Crosby, Luke Dickerson, Steve Estok, Chris Fawcett, John Foreman, Ellen Gendreau, John Haskins, John Irwin, Hans Koster, Charles Larking, Rory MacKay, Ben MacLellan, Kyle McNair, Roger Powell, Tom Stephenson, Ray Townsend, Ron Tozer, Dan, Erin & Greg Wilson and Fran Worth.

Loggers Day 2015 will be held on Saturday, July 25th. Mark your calendars!

The "William M" alligator boat at the Algonquin Logging Museum.



## THIRD PARTY FUNDRAISING EVENTS



Tawingo College partnered with The Friends of Algonquin Park to support our education and interpretive work. The students came to Algonquin Park for a guided wildflower identification hike and took pictures while they were

on the trail. The students then printed and sold their pictures and donated the proceeds to us. This creative partnership raised \$410 in support of Algonquin Park!

For more information on third party fundraising, visit [www.algonquinpark.on.ca/foap/donate/third-party-fundraising.php](http://www.algonquinpark.on.ca/foap/donate/third-party-fundraising.php) or call (613) 637-2828 ext. 239 to discuss your ideas.

## ADOPT AN ALGONQUIN CRITTER CAMPAIGN

The Friends of Algonquin Park ran campaigns throughout 2014 called, Adopt An Algonquin Critter. These "symbolic adoptions" were an opportunity to celebrate a special occasion and give a unique limited time gift, while supporting The Friends of Algonquin Park in their work to enhance the educational and interpretive programs in Algonquin Park.

Stay tuned for our upcoming initiatives in 2015!



## ALGONQUIN LOGGING MUSEUM Not just a museum, it's a walking trail too!

Be sure to visit the Logging Museum (km 54.5), which is like stepping into Algonquin's Logging past.



It is an educational outdoor museum which exhibits the forestry practices of Algonquin Park from its beginning to present day, all situated chronologically along a short barrier-free walking trail.

Our Logging Museum shop, located in the reception building, offers the perfect combination of logging related history books and forest field guides as well as a fabulous selection of woodland-themed toys, keepsakes and home décor ideas. Well worth the visit to the East end of the Park along Highway 60.

The Visitor Centre and Logging Museum are world-class interpretive centres. Both offer a superior customer service experience where friendly staff are always available to help.

A reminder that all proceeds from purchases made with The Friends of Algonquin Park help to enhance the educational programs in Algonquin Park.

# THE FRIENDS OF ALGONQUIN PARK

## FUNDRAISING RAFFLE 2015

Buy YOUR TICKET for just \$10

You could win one of...

1	<b>SWIFT CANOE &amp; KAYAK AND ALGONQUIN OUTFITTERS</b> Swift 16' Prospector Canoe, Kevlar Fusion with Carbon Kevlar Trim and Carbon Tech Package – 35 lbs., Set of 2 Badger Paddles and Canoe Safety Kit. Valued at: <b>\$4,293.40</b>	<b>ALGONQUIN HARVEST</b> The Friends of the Millie Lumber Company All prize packages include an Algonquin Harvest book
2	<b>SEVEN-NIGHT STAY AT COUPLES RESORT</b> 7-Night Couples Romance Package for 2 adults at an Ultra Luxury 5 Star Resort, valid Friday to Friday or Sunday to Sunday (not over a long weekend or Christmas & New Year's Holiday Season or August) – 3 meals per day and Sport Package included. Valued at: <b>\$3,636.75</b>	
3	<b>ALGONQUIN BOUND OUTFITTERS FIVE-DAY GUIDED CANOE TRIP FOR FOUR</b> Five-Day Adventure for Four including a 3-Day all-inclusive Guided Canoe Trip, 2-Night Stay at Algonquin Bound Inn, Backroad Mapbooks Prize Pack (4) – GPS Digital Software, Algonquin Park Waterproof Map, Backroad Mapbooks: Cottage Country and \$75 Algonquin Bound Gift Pack (4). Valued at: <b>\$3,283.24</b>	
4	<b>NOVA CRAFT CANOE</b> 16' Nova Craft Pal – Tuffstuff - Aluminum Trim Canoe, extremely resilient and lightweight, 49 lbs. Valued at: <b>\$2,915.43</b>	
5	<b>FAMILY STAY AT KILLARNEY LODGE</b> Stay in a private, two-bedroom cabin overlooking Lake of Two Rivers for your family or two couples for 2 Nights from May 13 to June 16, 2016 (excluding May 21 & 22, 2016) – 3 meals per day and canoes included. <b>David Kay, Art Gallery &amp; Studio</b> – "Algonquin Park Vista" – 12" x 16" original oil painting on a gallery wrap frame. Valued at: <b>\$2,081.75</b>	
6	<b>TWO-NIGHT STAY FOR 2</b> 2-Night Stay for 2 people, valid May 29 to July 11, 2016, includes accommodation, 3 meals per day and the use of all recreational facilities. <b>Jerry Schmanda, Algonquin Photography</b> 24" x 30" Giclee Canvas of Algonquin Park Wildlife. Valued at: <b>\$1,919.56</b>	
7	<b>TWO NIGHT STAY IN LAKESIDE CABIN</b> 2-Night Stay in one of our lakeside cabins for 2 adults, with breakfast and supper included – A True Algonquin Experience. <b>Peter Buwalda</b> – 3 - 8"x10" (tryptic) - Original Algonquin Flora drawings using Ontario plant-based dyes on stretched watercolour paper. Valued at: <b>\$1,641.19</b>	
8	<b>CAMP NORTHWAY</b> Attendance at a 1-Week Introductory Session for a girl (age 7-9) at Camp Northway, a wilderness camp on Cache Lake in Algonquin Park (value includes tuition and a camp store deposit). Valid in the 2016 season. Valued at: <b>\$1,185.96</b>	
9	<b>MAKING TRACKS ALGONQUIN WINTER EXPLORER PACKAGE</b> for 2 people, valid Winter 2016. 3-Days/2-Nights, including guided snowshoeing, cross-country skiing, kick sledding and lakefront ice skating. Log Cabin accommodation with all meals and snacks from arrival day dinner to departure lunch. All equipment provided. Valued at: <b>\$1,164.49</b>	
10	<b>DELUXE COMPLETE CANOEING OUTFITTING PACKAGE</b> 3-Day/2-Night unguided canoe trip for 2 people. All equipment you will need and generously proportioned do-it-yourself meals included. <b>Huntsville Comfort Inn</b> \$250 Gift Voucher for a 2-Night Stay plus \$50 Gift Card to be used at a local restaurant. Valued at: <b>\$980.85</b>	
11	<b>TWO GUIDED FISHING DAY TRIPS FOR TWO PEOPLE</b> – includes lunch and autographed copy of <i>The Last Guide</i> <b>Grey Owl Paddles Ltd.</b> 60" Guide Canoe Paddle. Valued at: <b>\$838.95</b>	
12	<b>V.I.P. MOTORIZED CANOE TOUR</b> for up to 3 people, plus an autographed copy of <i>Reflections of Algonquin Park</i> . <b>Spectacle Lake Lodge</b> 1-Night accommodation for 2 people in a deluxe waterfront cottage with a fireplace. Valid in the 2016 season. Valued at: <b>\$617.57</b>	

**RULES & REGULATIONS:** The Friends of Algonquin Park (FOAP) will conduct the raffle in accordance with the information supplied on the Raffle Licence Terms & Conditions provided by the Alcohol & Gaming Commission of Ontario (AGCO). FOAP has designated two executive officers to be responsible for the conduct of the raffle. Paid employees & Board members of FOAP & selected prize donors will be the sellers of the tickets. The following persons will not be eligible to purchase a ticket: Persons under the age of 18; Algonquin Park Staff & Board Members & employees of FOAP and their immediate families (ie, residing under the same roof); Prize Donors (ie, owners of companies that donated prizes for this raffle). Prizes must be claimed within 1-year of draw date. The only advertising of the Raffle will be in the form of signage at the actual locations where tickets are sold, and FOAP generated free park information publications and website. A list of winners will be posted on FOAP website ([www.algonquinpark.on.ca](http://www.algonquinpark.on.ca)) the week following the draw. 12 prizes valued at \$24,558.14 (including all taxes) will be awarded from highest to lowest value. Winning ticket not eligible for subsequent draws. Proceeds to The Friends of Algonquin Park. Tickets \$10.00 each. Draw: Sunday, November 22, 2015 at 1pm Algonquin Visitor Centre (6m-43). On the Draw date, tickets will be sold at the Visitor Centre, each only, until shortly before 1:00 p.m. 5,000 tickets printed. Licence #6490.

**Good Luck!**

The Experience Algonquin workshop series had a tremendously successful year in 2014. This marked the 7th year for this program and 125 participants joined in for 13 different workshops, including Wildlife Research Weekend, Demystifying Algonquin Park Bird Song, Discover Trout Fishing, Fall Lake Trout Spawning Survey and Wildlife Tracking.

The Experience Algonquin series began in 2008 as a way to give Park visitors more focused, in-depth educational experiences in Algonquin Park. Workshop participants work closely with expert leaders, usually in groups of 15 or less, accompanied by a Park Naturalist. Participants take home new skills and knowledge, and in some cases also field guides



and tools to help them pursue their interest further. The events are a great opportunity to experience Algonquin Park from a new and more hands-on perspective.

We are currently coordinating workshops for the 2015 season, such as:

- **March of the Salamander** May 2, 2015
- **Shanty Days: Exploring Algonquin Park's History of 19th Century Logging Camps** with Rory MacKay – May 9, 2015
- **Wildlife Research Weekend at the Wildlife Research Station** May 22-24, 2015
- **Demystifying Algonquin Park Bird Song** with Lev Frid – May 30/31 and June 6/7, 2015
- **Trout Fishing in Algonquin Park** with Greg Betteridge – July 4, August 8 and 15, 2015
- **Citizen Science: Fall Lake Trout Spawning Survey on Lake Opeongo** October 20/21, 22/23, 24/25, 27/28, 29/30

For a complete list of workshops, please visit: [www.algonquinpark.on.ca](http://www.algonquinpark.on.ca) Space is limited and advance registration is required for all workshops. To register, call (613) 637-2828 ext. 236.



For people passionate about Algonquin Park



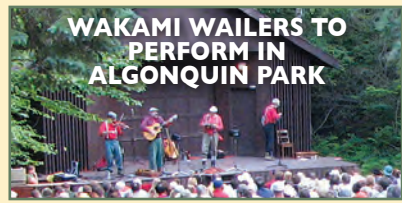
## VISITOR CENTRE BOOKSTORE & NATURE SHOP

More in the Bookstore



### Have you visited the Bookstore & Nature Shop at the Visitor Centre (km 43) lately?

Our shop presents an extensive, diverse selection of natural and human history book titles, quality souvenirs and gifts and nature-inspired memorabilia. Our Visitor Centre location is open year round and has a wonderful variety of nature-themed seasonal items too. We offer a great selection of local and Canadian-made gifts and souvenirs. Come in and browse! You will be amazed at what you may find to enhance the enjoyment or memory of your visit to Algonquin.



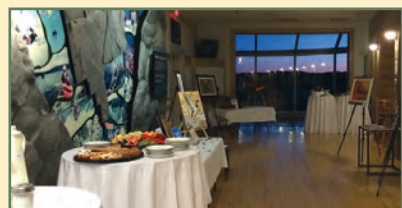
### WAKAMI WAILERS TO PERFORM IN ALGONQUIN PARK

The musical group, the Wakami Wailers, are scheduled to perform in Algonquin Park at Loggers Day on Saturday, July 25 and also at an open air concert on Sunday, July 26, 2015 at 7:00 pm at the Outdoor Theatre.

The award-winning, Ontario-based group will get your toes tapping through a fun-filled evening of entertaining stories and songs from their popular releases - *The Last of the White Pine Loggers*, *Waltz With the Woods*, and *River Through the Pines*.

This concert is brought to you by The Friends of Algonquin Park as a Special Event. Admission to this event is a minimum donation of \$2 per person.

*Last year's July performance was performed acoustically because the Outdoor Theatre was without power. Despite this challenge the Wailers performed and delivered what many fans said was one of their best performances ever!! Thanks for being such good sports "Wailers"!*



### CELEBRATING ALGONQUIN

Lucky ticket holders enjoyed an intimate evening viewing the beauty of Algonquin Park captured by photographers who share a passion for this special place. Proceeds from this Friends of Algonquin Park event supported the enhancement of the Visitor Centre photo mural.

The evening included door prizes, a silent auction, refreshments generously catered by **The Mad Musher** and photographic presentations by the **Wild Women, Michael Runtz** and **Bill Pratt**.

*This exciting event will be held again on September 12, 2015, at 7:00 pm For more details or to register, please visit [www.algonquinpark.on.ca](http://www.algonquinpark.on.ca)*

### MEET ELLEN

Ellen travels several times a year from central New York to visit Algonquin Park. Each time before she arrives she always asks, "How can I give back to Algonquin Park?" She has volunteered counting inventory, staffing the Logging Museum, and helping with special events.



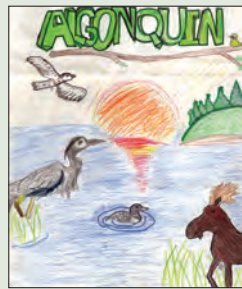
Not only does Ellen take the time to volunteer, she is a member, donor and workshop participant. Here is what she has to say: "How nice to come home earlier this week and find a package from Algonquin sitting on my door step! Thank you for thinking to send an Algonquin Thank-You in the form of a card and calendar. Both were very much enjoyed. Actually, I think I am the fortunate one in that I have the time to pitch in at the Park and am welcome to do so. For me, it's an opportunity to say 'thanks' to the Park I love and to know the Park in a different way. I hope there are more opportunities for me next year".

The Friends of Algonquin Park volunteer program is a way for individuals and groups to enjoy their Park and contribute to the stewardship of this treasured place. If you are interested in volunteering contact Stacey at: [volunteer@algonquinpark.on.ca](mailto:volunteer@algonquinpark.on.ca)

### 16<sup>TH</sup> ANNUAL ALGONQUIN FOR KIDS T-SHIRT DESIGN CONTEST

The winning design, chosen from 2014 submissions, was awarded to the talented team of Chris, age 9, and his cousin Hanna, age 10, entitled "Light of the Wilderness". This image is soon to appear on t-shirts available for sale in the Visitor Centre and Logging Museum Bookstores and through our online store with proceeds going back into the Algonquin For Kids education program. Congratulations Chris and Hanna!

We wish to thank all those who submitted designs in 2014 and encourage you to participate again this year. Contest rules and entry forms for our 2015 contest can be picked up after each Algonquin For Kids program (daily in July and August), or at the Visitor Centre information desk, or can be downloaded from our website. The Algonquin for Kids T-Shirt is available in Child or Adult sizing.



2014 T-shirt contest winner.

### A NATURALIST'S CALENDAR

Our 2016 Algonquin Park Naturalist's Calendar features a spectacular collection of Algonquin Park images, with interpretive messages, by photographer and former Park Naturalist, Michael Runtz. This calendar is perfect for your home or office and is always very popular. Don't wait too long to pick up your copy at our Visitor Centre store, Logging Museum store or online at [www.algonquinpark.on.ca](http://www.algonquinpark.on.ca)



### FOAP LOGO PRODUCTS

Check out the Logging Museum and Visitor Centre stores for great new Friends' custom items. Mugs, keychains, magnets, hats, t-shirts, and temporary tattoos, just to name a few. We take great pride in our logo and what it represents and we want to share it with you.



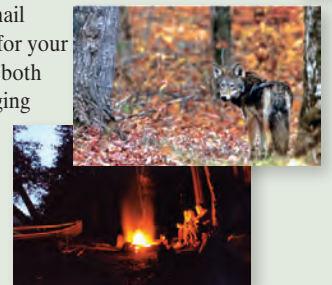
### BOOKMARKS

We are enhancing our selection of bookmarks for this season. Come on in and discover our beautiful bookmarks displaying some of Algonquin's most recognizable scenic images and creatures.



### POSTCARDS

We are, once again, adding to our great selection of postcard images in 2015. If you wish to mail your cards to friends or family, for your convenience, we sell postage at both the Visitor Centre and the Logging Museum locations. You don't have to mail them though; they are perfect for scrapbooks or to place in picture frames for display in your home or office.



## MAKE YOUR PURCHASE COUNT!

Show your passion for Algonquin and make purchases from The Friends of Algonquin Park at the Visitor Centre, Logging Museum, via phone/email order or online at [www.algonquinpark.on.ca](http://www.algonquinpark.on.ca) | **100% OF PROCEEDS** from sales remain in Algonquin Park to further the Park's educational objectives.



### VOLUNTEERS

In 2014 The Friends of Algonquin Park provided a volunteer at the Logging Museum from June to October. Thanks to our volunteers, Park visitors had a great visit to the museum. We had a total of 26 volunteers who contributed a total of 108

days and 945 hours of staffing assistance.

*Thank you to...June Ashcroft, Gord Ashcroft, Lori Beecroft, Erin Campbell, Chris Chambers, Rebecca Clark, Andrea Coulter, Harvey Cowan, Bonnie Engel, Mariska Engels, Aaron English, Ellen Gendreau, Ally Holmberg, Kathryn Howden, Mary Lawrence, Ernie Martelle, Frances Mawson, Jessica McComb, Kyle McNair, Amy Munro, Roger Powell, Alexandra Shisko, Janet Webber, Michele Wilson, Erin Wilson, and Andrea Zadow.*

If you are interested in volunteering from June 20 to October 18, 2015, please contact **Stacey at: [volunteer@algonquinpark.on.ca](mailto:volunteer@algonquinpark.on.ca) or (613) 637-2828, ext. 239.**

### MEET THE RESEARCHER DAY

Algonquin's Wildlife Research Station, in collaboration with The Friends of Algonquin Park, Ontario Parks and the Harkness Laboratory of Fisheries Research invite you to spend time with researchers who use Algonquin Park as their laboratory. Meet those who study reptiles and amphibians, birds, small mammals, fish, wolves and even humans. At this event you can meet the researchers and discuss their interesting research with them.

*The 7th Annual Meet the Researcher Day will be held on Thursday, July 30, 2015 from 9:00 am to 3:00 pm at the East Beach Picnic Pavilion.*

**A fundraising barbeque (noon to 2:00 pm, or while quantities last) is hosted by The Friends of Algonquin Park in support of research in the Park.**



Meet the Researcher Day.

### TURTLE RESEARCH IN ALGONQUIN PARK

Since 1972, Wolf Howl Pond and West Rose Lake, on Algonquin Park's Mizzy Lake Trail, have been the site of a long-term Painted Turtle research program started by Dr. Ron Brooks of the University of Guelph.

Since the start of the study, approximately 500 turtles have been marked in the two water bodies. The purpose of the research is to obtain a better understanding of the natural history and ecology of Painted Turtles.

A commemorative Turtle Research



Panel was installed on the Mizzy Lake Trail in the Fall of 2014. The panel honours the research of Dr. Ron Brooks and was made possible by The Friends of Algonquin Park, University of Guelph Integrative Biology Dept., the Algonquin Wildlife Research Station, Ontario Parks and many past turtle researchers.



### ADOPT-A-TRAIL

Thanks to our volunteers, all of our interpretive trails were adopted in 2014! Volunteers walk their trail weekly, picking up litter and reporting any serious problems to us so we can inform the Ontario Parks trail crew. A plaque at the entrance of the trail acknowledges the support of these volunteers. **The Friends of Algonquin Park is very grateful to the following dedicated volunteers:**

**Algonquin Logging Museum** ~ Alice Ruddy, Lucille Lepinskie, Phil Deadman  
**Barron Canyon & Berm Lake** ~ Fred Blackstein  
**Brent Crater** ~ Brent Access Point Staff  
**Bat Lake** ~ Pat Mead-Lawson  
**Beaver Pond** ~ Marla Allison  
**Big Pines** ~ Kevin & Dolores Fotherby  
**Booth's Rock** ~ Jim Sternberg

**Centennial Ridges** ~ Stephen Derraugh  
**Hardwood Lookout** ~ Canoe Lake Access Point Staff  
**Hemlock Bluff** ~ Lisa Gregory  
**High Falls System, South** ~ Bernd, Sylvia & Kay-Uwe Reddig & Gladys, Nicholas & Madison Stoneham  
**Lookout** ~ Gord & Bernadette Nugent  
**Mizzy Lake** ~ Mike Matymish  
**Peck Lake** ~ Huntsville Nature Club  
**Spruce Bog Boardwalk** ~ Chris & Barb Zeagman  
**Track & Tower** ~ Dan Strickland & Jan Richmond  
**Two Rivers** ~ Algonquin Moon B & B  
**Whiskey Rapids** ~ Huntsville Nature Club

*A special thanks to Gordon Ashcroft who took the time to fill in whenever he was needed in our Adopt-A-Trail program!*



The Friends of Algonquin Park is pleased to report that \$677.36 was raised through the LCBO's Donation Box Program. We received in-store donations for a one-month period during July and August 2014 from 21 stores around Algonquin Park. We have been approved to receive in-store donations at the following stores: North Bay, Burks Falls, Sundridge, South River, Powassan, Huntsville, Dorset and Dwight, so watch for our donation boxes at LCBO stores all around the perimeter of Algonquin Park in the summer of 2015, and please give generously.

## BOARD OF DIRECTORS

Kim Smith - *Chair*  
Lori Beecroft - *Treasurer*  
Brian Steinberg - *Secretary*  
Debbi Miller - *Past-Chair*  
Carl Corbett  
Gordon Gibson  
Brian Maltman  
Bob McRae  
Don Spring  
Dan Strickland  
Pat Tozer  
Ron Tozer

## STAFF

Lee Pauzé  
*General Manager*  
Maureen Luckasavitch  
*Business Coordinator*  
Sharon Hockley  
*Bookstore Coordinator*  
Stacey Finch  
*Partnership Coordinator*  
Chris Williams  
*Bookkeeping & Payroll Coordinator*  
Kevin Clute  
*Group Education Coordinator & Special Projects Leader*  
Elva Bennett  
*Program Coordinator*  
Trina Chatelain  
*Collections Intern*

## A big thanks to our seasonal staff that worked with Park visitors during 2014:

*Group Education Technicians*  
Chris Boettger  
Lev Frid  
Breanna Hall  
Ritsuko Honda  
Ryan Rea

*German Language Visitor Services Specialist*  
Annemarie Eckes

*Staffhouse Cook*  
Robin Parks

*Trail Technician*  
Cathy Chartrand

*Museum Technicians*  
Trina Chatelain  
Emily Gill  
Bethany Howden  
Lynda Maheu  
Sean Moulton  
Kate Schenk  
Paige Wilson

*Naturalist Trainees*  
Michael Kent  
Ryan Rea  
Andrew Tyerman

## MONTHLY GIVING

Have a pre-determined amount of your choice donated monthly. This can be done online at [www.algonquinpark.on.ca/foap/donate/recurring-giving.php](http://www.algonquinpark.on.ca/foap/donate/recurring-giving.php) or by calling our Partnership Coordinator who can help you set up this meaningful recurring gift.

The Friends of Algonquin Park is pleased to report that the following donors are part of our monthly giving program.

- Leon Budziszewski
- Barry Dartnell
- Joseph Davis
- Stephen Derrrough
- Frances Gregory
- Dan Harris
- Glenn & Maria Hewitt
- Polly Kenneth
- Wayne MacGregor & Vina Parker
- Lynn Stewart
- Dean St. Germain
- Ann & Mike Tanner
- Joan Tintor
- Volker & Joanne Triebe
- Frank and Mary Whitson
- Gregory Worsnop
- Barbara Young

## OUR MOST RECENT MONTHLY DONORS

The following donors will provide additional support in 2015:

- Elva Bennett
- Jerri Merritt Jones
- Wendy Stevens

If you wish to join our monthly giving program, please contact (613) 637-2828 ext. 239

Thank you for your support!

# WHAT IS YOUR Algonquin Park Legacy?

Build your legacy of support for Algonquin Park by contributing to The Friends of Algonquin Park.

It is the support from individuals who are passionate about Algonquin Park that enables The Friends of Algonquin Park to continue enhancing research, the development and delivery of educational programs, workshops, special events plus the production of award-winning educational materials.

Photo: Tina McAuley

## Inspire Future Generations

## SIMPLE & EFFECTIVE WAYS YOU CAN SUPPORT YOUR ALGONQUIN PARK:

**Make a Donation** – A contribution made today is greatly appreciated and very important. Donations can be made in person at either the Visitor Centre, Logging Museum or by mail, telephone or online.

**In Honour** – Have your donation commemorate an event or person, celebrate a special occasion in the life of a friend or family member. An acknowledgement card can be sent to the honouree on your behalf.

**In Memoriam** – Make a gift in memory of a loved one who was especially fond of Algonquin. An acknowledgement card can be sent to the family or friend that you designate.

**Become a Member** – Purchase an annual membership that shows your dedication to Algonquin while gaining you membership rewards.

**Make a Purchase** – By shopping at The Friends of Algonquin stores, you are giving back to the Park in two ways. Firstly, you are helping to educate yourself and others about this special place. Secondly, 100% of the proceeds from your purchase stay in the Park and are used to foster an appreciation for Algonquin Park.

**Make the Gift of Time** – Volunteer to help with the operation of the Algonquin Logging Museum, or the Adopt-a-Trail program. For more details on our volunteer program visit: [www.algonquinpark.on.ca/foap/volunteer](http://www.algonquinpark.on.ca/foap/volunteer)

**Third Party Fundraising** – Hold an event in support of The Friends of Algonquin Park. Your event can be almost anything: sell a product or service and direct a portion of the proceeds to support Algonquin Park; throw a party and ask guests to bring a donation in place of a gift; host a recreational event and ask for a donation instead of an entry fee; or develop a donation box at your place of business with donations directed to

The Friends of Algonquin Park. Please note that all third party fundraising events must be approved in advance of the event by The Friends of Algonquin Park. To find out more, visit [www.algonquinpark.on.ca/foap/donate/third-party-fundraising.php](http://www.algonquinpark.on.ca/foap/donate/third-party-fundraising.php)

### Stay Informed

Receive our monthly eNews by signing up at [www.algonquinpark.on.ca](http://www.algonquinpark.on.ca)

These are all things you can do today to show your passion for Algonquin Park and allow us to continue to emulate this passion through our work.

If you recognize the importance of supporting Algonquin through The Friends of Algonquin Park but are unable to make a commitment today, you may wish to consider a planned giving option.

### DOUBLE YOUR DONATION

Employee-matching gift programs are corporate giving programs in which the company matches donations made by employees to eligible charitable organizations. Inquire with your employer to see if your support of Algonquin Park can be easily doubled.

## Thanks for Your Support!



### WHAT IS PLANNED GIVING?

Planned giving allows you to make a gift to Algonquin Park today where the value of the gift is deferred, in whole or in part until a later date, often upon the death of the donor and depending on the type of gift, income tax relief is either realized today or in the future. Of course, talking to your lawyer or financial advisor will help you and your family decide how to best fulfill your legacy to Algonquin Park.

### YOUR ALGONQUIN LEGACY GIVING OPTIONS

**You could make a difference and ensure your legacy in Algonquin Park by considering these options:**

**Bequest** - This is a gift that you make through your will. It can be for a specific amount, a percentage of your estate or the residual of your estate. Your bequest will symbolize a lasting memorial for you and your family.

**Gift of Life Insurance** - Life insurance is a way to make a significant gift in the future at an affordable current cost without reducing the value of your estate available to your family. You can either give an existing policy or take out a new policy naming The Friends of Algonquin Park as the beneficiary.

**Shares or Securities** - This can be established by contributing bonds, stock securities or mutual funds that have appreciated in value since their purchase and avoid capital gains tax.

**Registered Assets (RRSPs & RRIFs)** - A gift of registered assets would enable you to fulfill dual goals of supporting your favourite charity while reducing the amount of taxes that your estate would have to pay. If the RRSP or RRIF has The Friends of Algonquin Park as the direct beneficiary, the estate will receive a donation receipt for the entire value of the plan.

**Gift of Real Estate** - The gift of real estate allows you to give an immediate gift and receive an immediate tax receipt for the fair market value of your property. These gifts include: residences, farms, land and commercial property. Giving a gift of real estate allows you to simplify your estate and give to The Friends of Algonquin Park during your lifetime.

**Residual Interest** - This type of gift is given by those who plan to donate a property through a will bequest but would like to reduce income tax presently and continue to use and enjoy the property over their lifetime.

**Endowment** - Your charitable fund would be invested and earnings from your contribution would generate a reliable source of funds, providing a legacy that lasts forever.

For more information: Lee Pauzé, General Manager  
(613) 637-2828 ext.234

### In Memory of OUR FRIENDS



It is with sadness that we inform you of the passing of Bert Cain. Bert volunteered on the east side of Algonquin Park with the Adopt-A-Trail program ever since the volunteer program began. We will miss his smiling face, cheerful spirit, and dedication.



Darwin Larson shared his passion for Algonquin Park by volunteering for the last two years with the Adopt-A-Trail program. Darwin was a quiet, dedicated volunteer who came from Bracebridge once a week to hike Bat Lake.

The Board and Staff express our deepest sympathies to the families.

For more information please contact The Friends of Algonquin Park  
[www.algonquinpark.on.ca](http://www.algonquinpark.on.ca) • [friends@algonquinpark.on.ca](mailto:friends@algonquinpark.on.ca) • (613) 637-2828

## Thank You For Being Passionate About Algonquin!

For a list of 2014 Donors who supported The Friends of Algonquin Park, visit [www.algonquinpark.on.ca](http://www.algonquinpark.on.ca).

